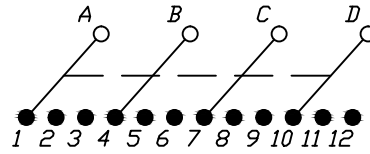
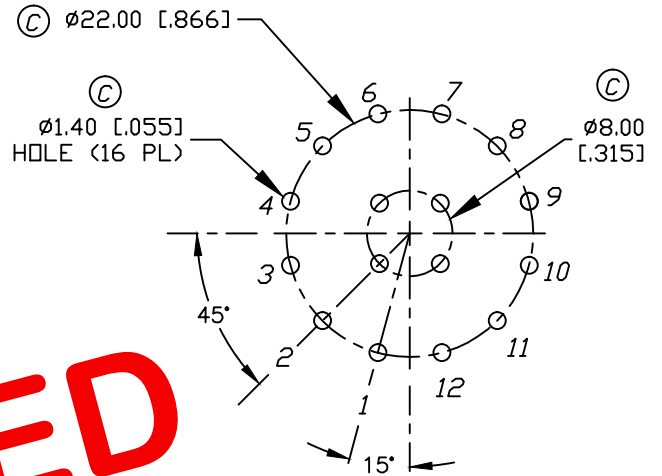


NOTES:

1. ALL DIMENSION IN MM [INCH]
2. GENERAL TOLERANCE: X.X=±0.4
X.XX=±0.25
3. TERM. NOS. FOR REF. ONLY
4. CONTACT RATING SWITCHING: 150mA, 250V AC/DC
350mA, 110V AC/DC
5. OPERATING FORCE: 425±100 CM/STANDARD
6. OPERATING TEMP: -30° to 85°C
- ▲ 7. CIRCUIT 4Pole: 3 POSITIONS, 30° INDEX.
- ▲ 8. DESIGNATE MAJOR DIMENSIONS
9. HARDWARE TO BE SUPPLIED ON SWITCH:
HEX NUT, STOP RING, LOCK WASHER



CONTACT CONFIGURATION (BBM)

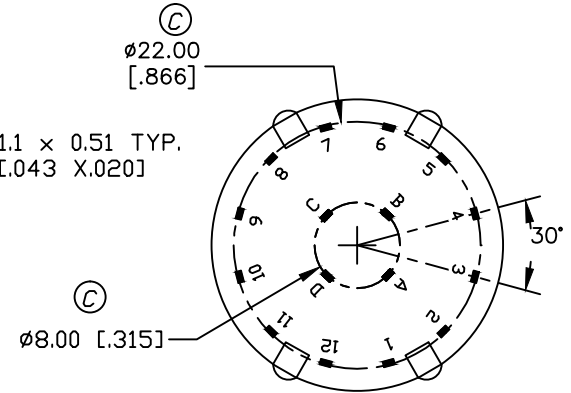
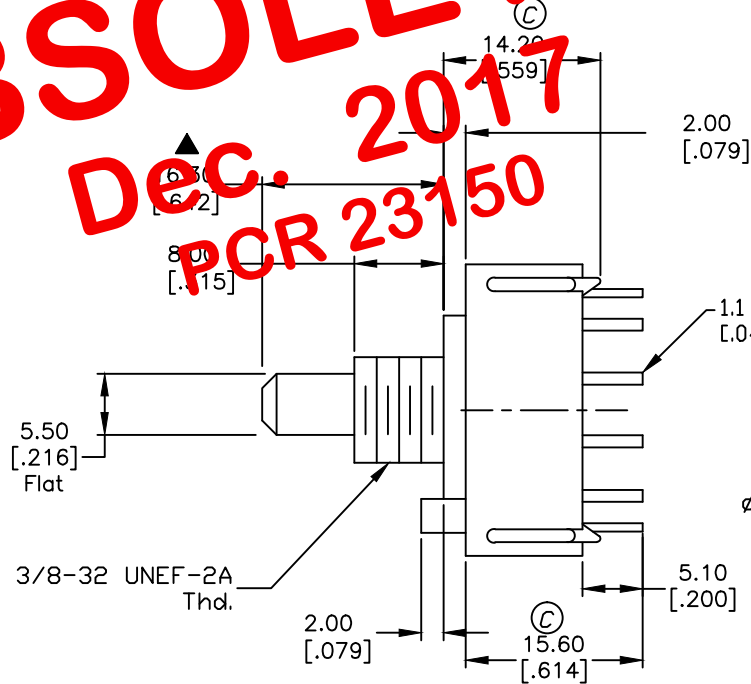
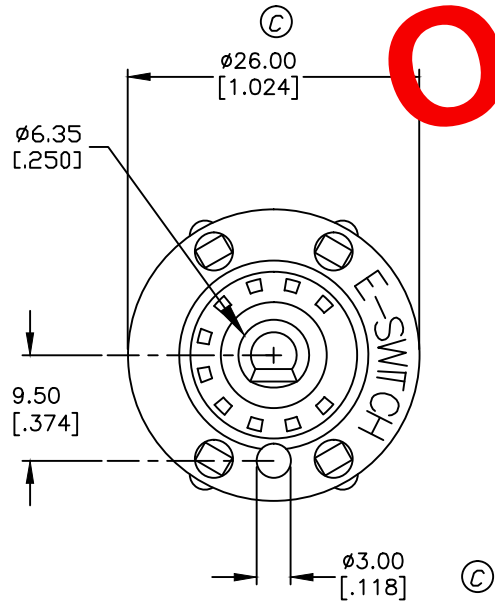


RECOMMENDED P.C.B. LAYOUT

OBSOLETE

DEC. 2017

PCR 23150



C	15552	DIMENSIONAL CHANGES NOTED (C)	11/21/05	PH
B	15548	EDIT HARDWARE NOTE	11/18/05	PH
A	11516	RELEASED FOR PRODUCTION	5/29/01	CJB
REV.	ECN No.	DESCRIPTION	DATE	CHKD

THE INFORMATION CONTAINED IN THIS DOCUMENT IS PROPRIETARY TO E-SWITCH AND IS NOT TO BE COPIED OR TRANSFERRED

E-SWITCH®				
TITLE KC-43-A-01-N-P-S (B=16.3mm)				
SCALE 1.5:1	DATE 5/29/01	DR CJB	DWG G510471	REV C